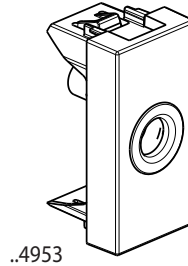
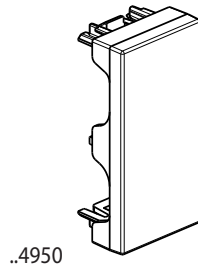


Blanking modules and outputs



Use

Blanking modules and outputs.

Connection

Authorized cable: maximum cable 12.5 mm..

Range

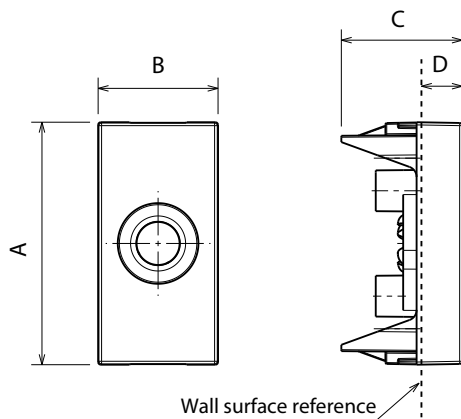
Designation	Item
Blank plate	<input type="checkbox"/> JW4950 - JW4950AB
	<input type="checkbox"/> JG4950
	<input type="checkbox"/> JB4950
Simple output \varnothing 9.5 mm	<input type="checkbox"/> JW4953
	<input type="checkbox"/> JG4953
	<input type="checkbox"/> JB4953

Colors: White Grey Black

Technical characteristics

- **Protection index:**
(considering a complete installation, including cover plate)
 - Penetration by solid bodies/liquid: IP40 for ..4950
 - Penetration by solid bodies/liquid: IP20 for ..4953
 - Impact test: IK 04
- **Material characteristics:**
 - Material: ABS for JW4950AB ABS antibacterial
 - Halogen Free
 - UV Resistant
 - Self-extinguishing: 650°C/30s
- **Climatic characteristics:**
 - Storage temperature: -10° C to +70° C
 - Use temperature: -5° C to +35° C

Overall dimensions (mm)



	A	B	C	D
..4950	45.1	22.3	37.5	7.6
..4953	45.1	22.3	15.7	7.6

Cleaning

Clean the surface with a cloth.
Do not use acetone, tar-removing cleaning agents or trichloroethylene.
Caution: Always test before using special cleaning products.

Standards and approvals

Compliance with standards IEC/EN 60669-1.
Refer to e.catalogue.