

### Description

2 wire telephone and video handset for wall mounted installation (with optional bracket, item 345024) or table-top version (with optional support, item 345023). It has a 16/9, 4.3" LCD colour touch screen display with icon navigation menu, which can be customised using a PC for the management of the functions:

- telephone;
- video door entry
- MyHOME automation: temperature control, sound system, automation scenarios, burglar alarm.

The device also features:

- backlit keypad with blue LED.
- handset with magnet for logic release functions through the Hall sensor fitted inside the base, with extendable spiral cable. On the back of the receiver is a loudspeaker for the handsfree function.

Programming and configuration are made using the specific software, which can be downloaded free of charge from [www.homesystems-legrandgroup.com](http://www.homesystems-legrandgroup.com); this mode has the advantage of offering many more options when compared with the physical configuration.

### Technical data

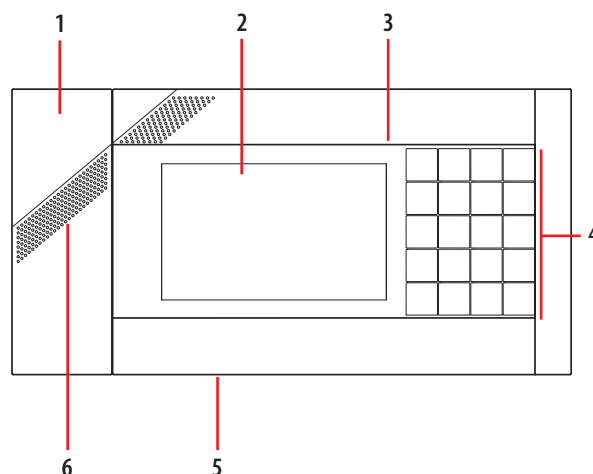
Power supply from SCS BUS:	18 – 27 Vdc
Maximum absorptions from the BUS:	
- Standby	35 mA and up to 160 mA when the telephone functions are used.
- ON	350 mA
- With additional power supply (1-2)	20 mA
Operating temperature:	5 – 45 °C

### Legend

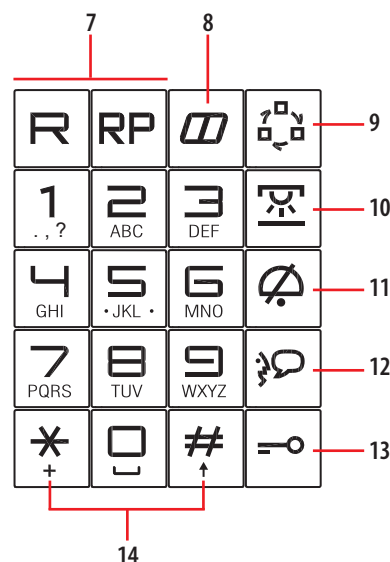
1. Handsfree loudspeaker
2. Handset
3. LCD colour touch screen display: it displays the user menus and shows the images recorded from the entrance panel and from other cameras
4. Handsfree microphone
5. Backlit keypad
6. Mini USB PC connection
7. Call forwarding and repeat/pause telephone function keys
8. Telephone address book key
9. EP switching on and camera cycling key
10. Stair lights switching on key
11. Call exclusion key: press once to disable the ringtone (telephone and video door entry system), and press again to enable. Steady red LED with ringtone disabled, flashing for incoming call and ringtone disabled
12. Handsfree enable/disable key. Green LED when enabled
13. Main EP door lock release key. Notification LED:
14. - off when the door lock is idle and the door is locked, red when the door is open
15. - red flashing when the Office function is active
16. \* and # keys used for telephone services
17. Line termination ON/OFF switch
18. PSTN telephone line or PBX switchboard connector
19. 2 wire video SCS/BUS connector
20. 1-21) power supply connector
21. Configurator socket
22. Bracket fixing screw.

Note: 1) The telephone functions are still ensured in case of power cut to the SCS/BUS, provided that an additional power supply is present. (1= -; 2= +)

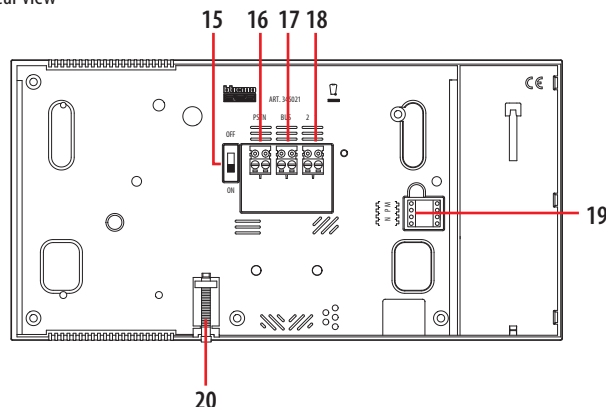
Front view



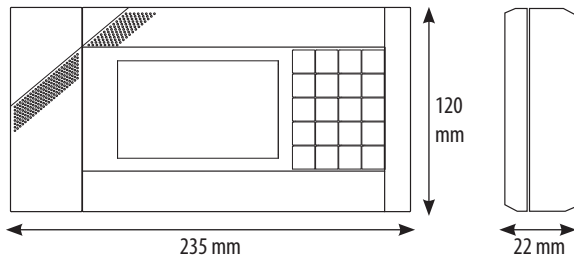
Keypad



Rear view



## Dimensional Data



## Rules, certification, marks

Iryde Touch Phone 345020 – 345021 complies with the 1999/5EC directive, certified following the current regulations listed below:

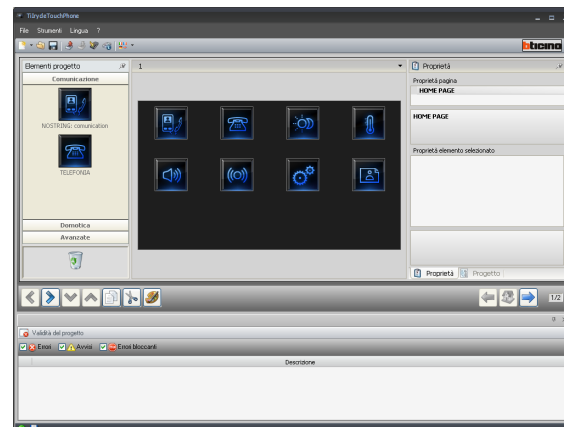
- EN 60950-1:2006-04 + EN 60950-1/A11:2009-03
- EN 50090-2-2/EC:1997-03 + EN 50090-2-2/A1:2002-01 + EN 50090-2-2/A2:2007-04

## Configuration

Iryde Touch Phone can be configured in two different modes:

- **Basic configuration:** when switched on for the first time, the product asks the user to select the language. After this has been done, if no physical configurators are present, the device displays a main page showing the video door entry system icon (inside which, standard door entry system commands can be found: camera, door lock release, intercom, automatic cycling), the telephone icon, and the settings icon. The basic configuration can also be performed using physical configurators: N (address of the device within the video door entry system), P (address of the EP associated to the device)

- **Configuration using the PC:** using the software, it gives the possibility of configuring the main menu page without being limited to a pre-set number of functions. Each function may be customised in terms of type, parameter, and text. PC configuration provides:
  - better flexibility in the creation of the menu;
  - customisation of text;
  - functionalities for the management of the MyHOME automation systems.



## Main functions

- **Simultaneous switching on with additional power supply:** it is possible to connect up to 4 ITPs with no additional power supply. In case of simultaneous switching on of several menus, display brightness limitation occurs. In system with or without PABX switchboard, where however the PSTN telephone line and the SCS BUS are connected using the star wiring solution, the image from the camera is visible on all the ITPs, provided that these are powered individually using the additional power supply (item 346020). In general, when installing systems in apartments with ITPs connected to the telephone line, the installation of the apartment interface, item 346850, is also required.
- **Home automation functions:** using the software, it is possible to configure the pages for the control of the home automation systems installed inside the home. The available pages are: alarms (alarm log display), sound system (programming of the rooms and source names), temperature control (management of the 4 zone and 99 zone system), execution of scenarios.
- **Ringtones:** stored in the ITP, can be associated to specific events: door entry system, telephone, and intercom call, alarms, etc. The ringtones are played by the loudspeaker used for the handsfree function. It is possible to update the ringtones, with Wav or MP3 files, using the configuration software.

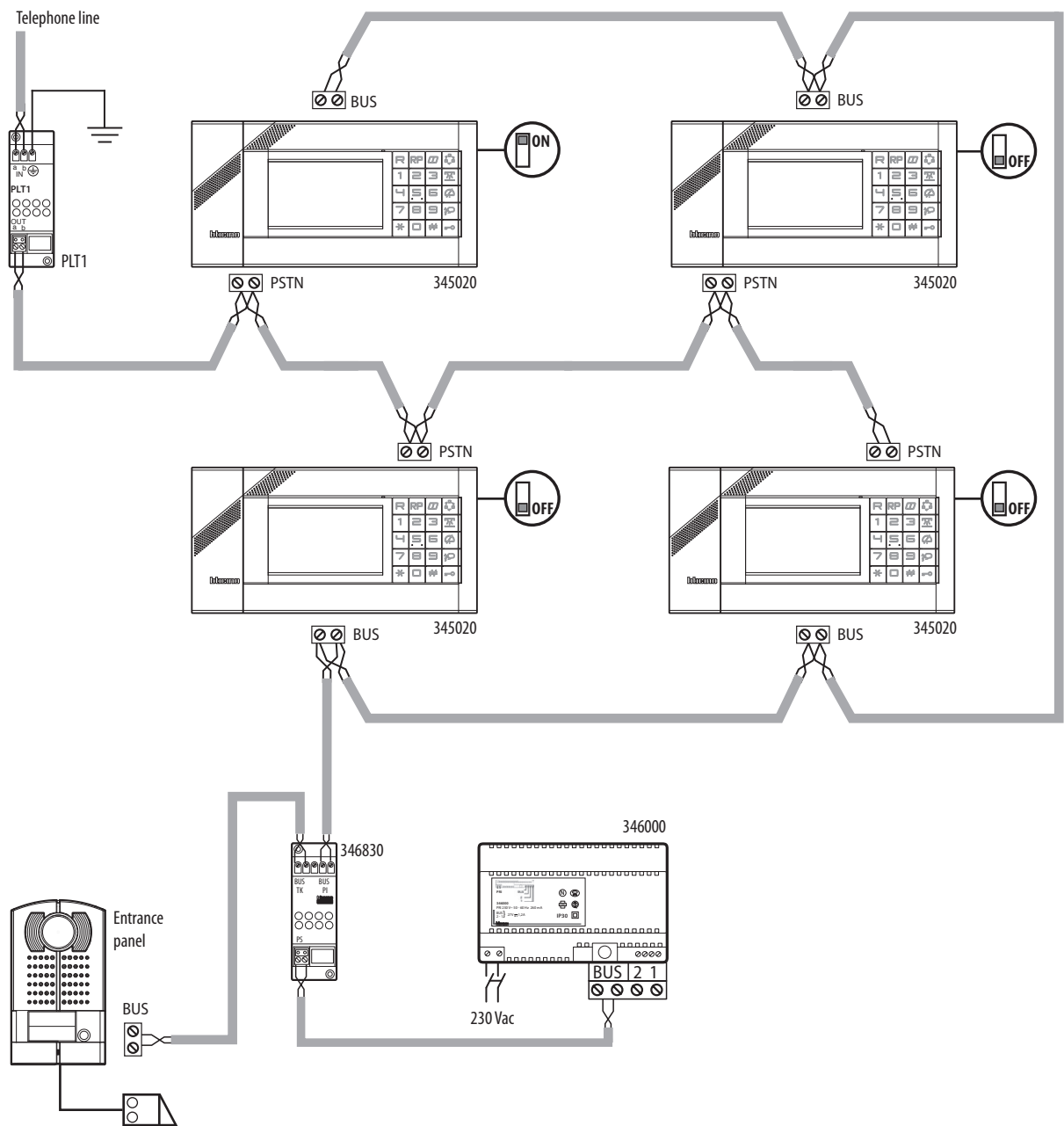
- **Address book:** using the telephone menu, the address book can be used for the following functions: add a contact, delete a contact, change a contact, select and call a contact, customise a contact by associating a photo to the number (using the software), management of several numbers (max 3) for each contact.

### Telephone services

- **Calling a number on the PSTN line:** using the appropriate keypad command, the user can select the PSTN telephone line on which to make the call. ITP is capable of selecting a telephone number on the PSTN line in touch tone mode (DTMF).
- **Calling a number on the private, or system, address book using the PSTN line.**
- **Pager:** Press the dedicated icon to communicate with handsets and telephones with handsfree function.
- **Answering incoming calls.**
- **Differentiated call:** when a call arrives, the user has the possibility of distinguishing between type of calls (intercommunicating, from the outside line, or video door entry system call), by using different sound tracks.
- **CID service:** upon arrival of a PSTN line call, the caller number or name is displayed (if the number is included in the address book), together with the photo of the caller (if present in the private address book). The availability of the service is subjected to the activation of the function for forwarding information by the central unit.
- **Extension call (intercommunicating call):** possibility for the extensions to talk to each other. The selection of the extension to call can be made in two ways:
  - by entering on the code of the extension to call on the keypad (from 401 to 408)
  - by selecting the extension to call from the menu, and then pressing "OK" to confirm the call
- **General call of all the extensions:** it is possible to make an announcement on all CTB and ITP extensions using the loudspeaker on the bases of the telephones. To activate the service lift the handset and press the dedicated icon. The first telephone engaging the line enters in conversation with the caller, excluding all the other extensions called. If no answer is received within the activation time, the service is interrupted and the caller receives a time-out tone. The service can be interrupted by replacing the handset. Press the "pager" key during the activation time or when the time-out tone is heard from the handset to reactivate the service. The microphone used for the pager function can be the handset or the handsfree microphone.
- **Automatic redial of the last external number.**
- **Putting a call on and off hold on the telephone line:** the extension engaged in the call can put the user of the PSTN line on hold by pressing the "R/HOLD" key. While on hold the extension can:
  - enable a permitted service.
  - restart the conversation by replacing the handset (call return).
  - restart the conversation on hold by pressing the "R/HOLD" key again.
- **Answering a second call.**
- **Transfer without consent in case of free tone:** in case of installation with PABX, after pressing "R" and selecting the number of the extension to which to transfer the conversation, the user can replace the handset once a free tone is heard.
- **Transferring a door entry system and DOSA outside line call:** in case of installation with PABX.
- **DISA service, selection of the handset from the outside line using the voice menu:** in case of installation with PABX.
- **Day/lunchtime/night scenarios for the various telephone lines:** in case of installation with PABX.

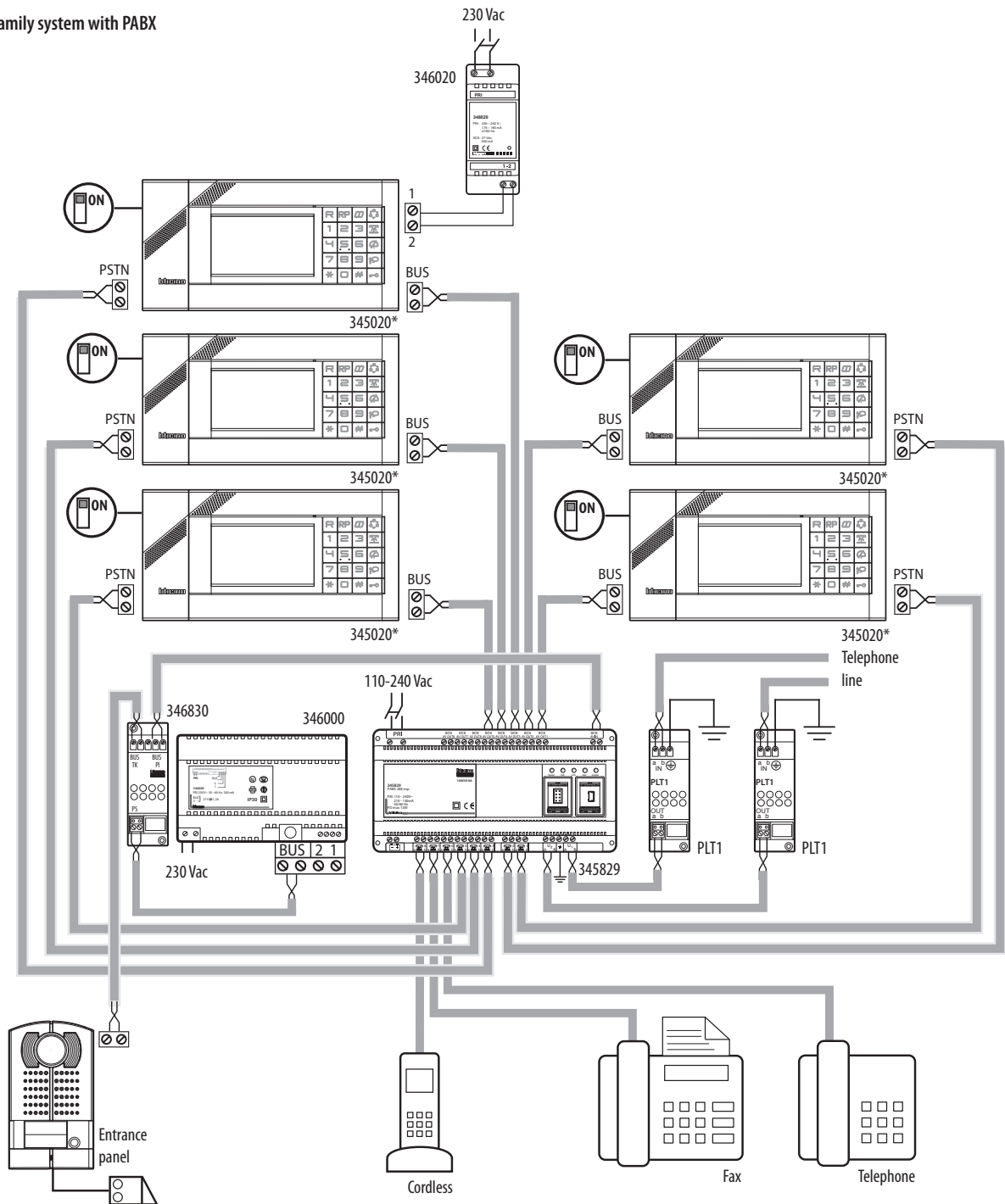
Wiring diagrams

One-family system without PABX



ITEM	DESCRIPTION	QUANTITY
PLT1	Protection of telephone line	1
345020	Iryde Touch Phone	4
346830	Video adapter	1
346000	AV Power supply, 230 V	1

One-family system with PABX



Note (\*): configure the ITPs (using the Menu or the Software) to recognise that the PABX switchboard is present

ITEM	DESCRIPTION	QUANTITY
PLT1	Protection of telephone line	2
345020	Iryde Touch Phone	5
346830	Video adapter	1
346000	AV Power supply, 230 V	1
345829	Switchboard	1
346020	Power supply	1